

B/W CAMERA WITH IP INTERFACE AND INTEGRATION NUMBER PLATE RECOGNITION SOFTWARE

The **EXCI-3** camera system integrates B/W Sony Smart Camera with IP interface and number recognition plate software. The camera system is designed to solution aimed primarily applications within corporate parking sector for example parking entrance, garage entrance, drive through low speed section, etc. It is possible to integrate the camera into other systems as access control systems.

EXCI-3 camera system includes:

- **XCI-V3** Smart Camera with lens and housing
- **Software** number plate recognition software loaded in camera and client software for remote control and recording
- **SNCA – IR 20** external infrared illumination
- **EPS** external power supply unit with connection interface

The EXCI-3 camera is equipped with RS-232 / RS-485, Ethernet interfaces and Wiegand 26-bit interface.

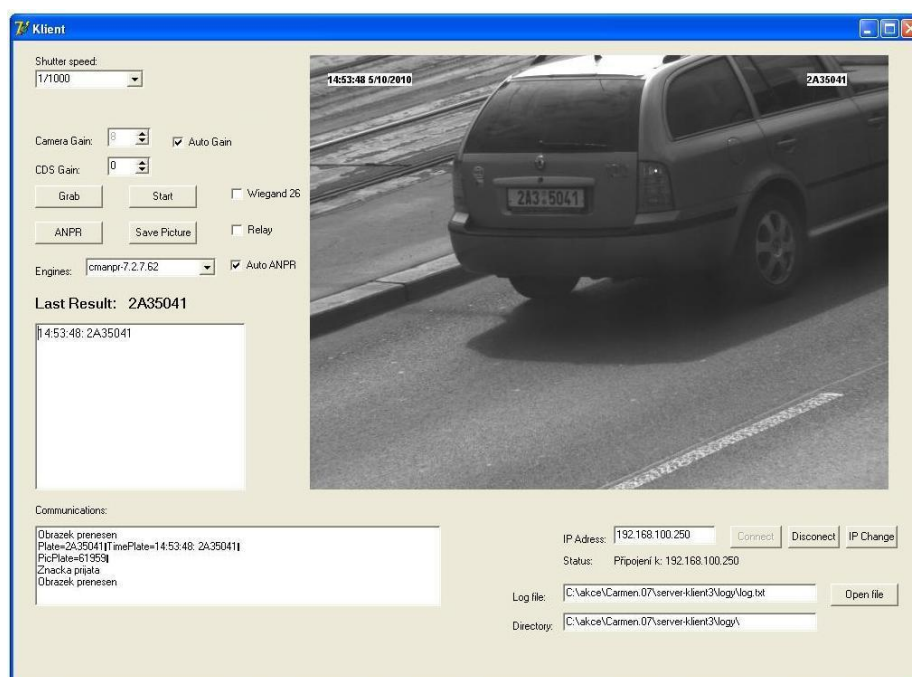
The software module for number plate recognition is loaded in the camera. This software is working in 120 countries in the world and it is able to recognize the letters of Latin, Arabian, Chinese or Cyrillic alphabets. The software is activated by USB key in port of camera.

The next part of software is Client module working with Win XP or Win 7 operating system. Client software communicates with the camera through Ethernet.

Client software is available:

- to image live picture of the camera on PC
- to record the pictures of recognized number plates in JPEG format
- to record day and time when the car plate was recorded
- to create the list of the recognized number plates.
- to set parametrs of the camera

The SDK are available for easy CCTV integration. The JPEG format of the picture with the recognized number plate information is possible to transfer via Ethernet.



EXCI-3

B/W CAMERA WITH IP INTERFACE AND INTEGRATION NUMBER PLATE RECOGNITION SOFTWARE

Technical features

- B/W camera XCI-V3
- 1/3 IT monochrome CCD progressive scan, resolution 330.000 pixels (VGA 640 x 480)
- Frame rate up to 60 fps
- Lens C-mount
- Infrared lens Manual Zoom/Iris, Focus 10-40 mm
- Minimum illumination 1 lx
- Embedded automatic number plate recognition software
- Client software for camera manage and control
- External infrared illumination source 850 nm
- RS-232 / RS-485, Ethernet or Wiegand 26-bit
- Voltage / Power consumption 230 VAC / 45 W



Technical specification	EXCI-3
Camera	
Image device	1/3 IT Monochrome CCD Progressive Scan
Effective resolution / Frame rate	640 x 480 pixels / 60 fps (VGA)
Electronic shutter	1/15 to 1/25000 s
Processor	
CPU	X86, AMD Geode GX533, 400 MHz
Operating System	Windows XP Embedded
Interface	
Serial Interface	RS-232C / RS-485
Wiegand	26-bit
Ethernet	100Base-TX/10Base-T (Network protocols TCP/IP (IPv4))
Monitor output	D-sub 15-pin
USB	Hardware License USB key
Power requirements	
Power supply voltage / Current rating	230V AC / 0,6 A
Power consumption	max. 45W
General	
Distance Range	4 to 20m (or more, it is depend on lens and IR light)
Lens	C-mount, Manual Zoom-Iris, Focus 10 - 40 mm
Infrared Light	External IR reflector SONY SNCA-IR20 850 nm
Minimum illumination	1 lx (F1,4 / gain +18dB)
Operating / Storage temperature	-20 to +50°C / -30 to +60°C
Operating / Storage humidity	20 to 80 % / 20 to 95 % non condensing
Hmotnost	3,2 kg (3,65 kg with sunshield)
Dimensions	138x117x375 mm
Power supply	IP65 case with cable glands 6x PG9 (275x220x140mm)
Software features	
Setup	Ethernet (10/100MB/s)
Software	SW – number plate recognition; CLIENT – for manage and control
Recognition	Letters of Latin, Arabian, Chinese or Cyrillic alphabets
Speed	Low speed vehicles up to 30 - 40 km/h
Recognition Frequency	850 ms (RS-232, RS-485); 1,5 – 2 s (Ethernet)
Interface	SDK for integration to CCTV
Data transmission	Ethernet (10/100 MB/s), RS-232 / RS-485 or Wiegand 64-bit
Images	640 x 480 pixels JPG through TCP/IP