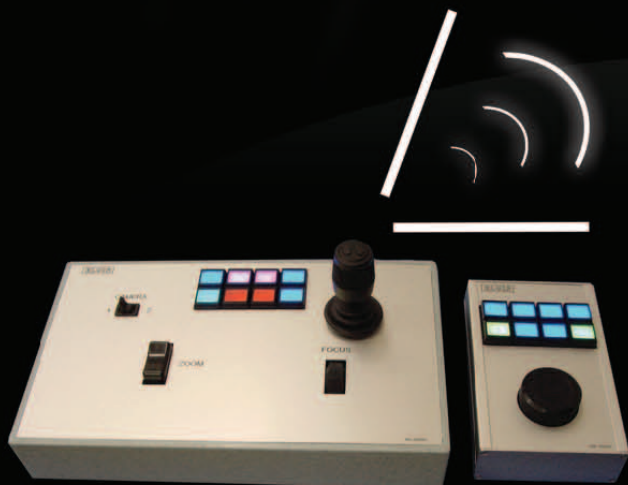
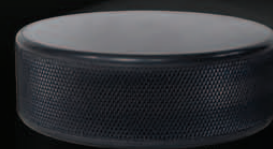


HOCKEY-CAM HD

Hockey goal HD-camera system

- ⇒ Uncompressed video wireless
- ⇒ Data transmission
- ⇒ Easy control
- ⇒ HD quality (1080/50i)
- ⇒ 360° per 1 sec rotation



Cameras control panel

System description:

2 pcs rugged, pan-tilt goal cams with Sony HD sensor. Mounted inside (top) of the goals.

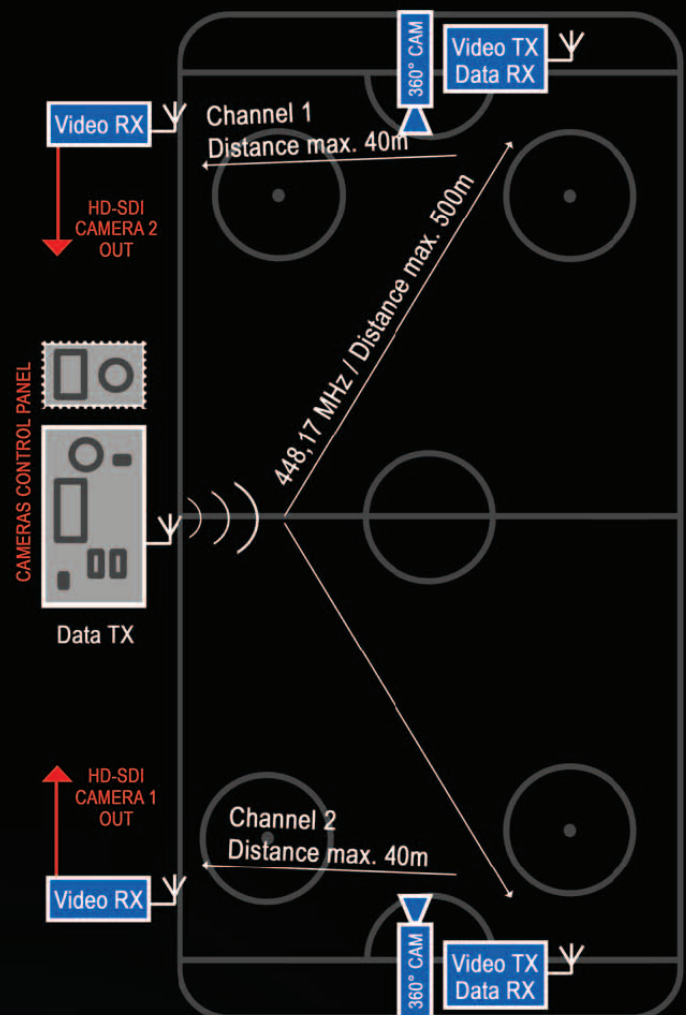
2 pcs rugged goal enclosures with batteries and signal transmitters. Ready to be mounted in the back of the goals.

Cameras control panel for pan and tilt, camera setting controls, focus and zoom.

Signal receiver. Connection ready for an optional fiber optic signal transmitter.

Cameras color pallet control panel.

Schema functionality:



System specification - Hockey-CAM HD



Set specification

Power - ground system	230 V
Power - in-goal system	14,4 V batteries SONY BP GL95A
Battery run time	4 hrs
Temperature range	-2 to + 40°C
Ground system protection rating	IP 55
In-goal system protection rating	IP 65

Camera specification

Sensing chip format	1/3 type CMOS
Number of pixels	2 000 000 pix
Aspect ratio	16 : 9
Lens	3,6 - 36 mm
Max. Horizontal angle (field of view)	70° (options 90° or 105° - no zoom)
Signal to noise ratio (SNR)	>50 dB
Output signal format	1080/50i
Video out	HD-SDI-SMPTE 292M
Camera rotation	360°
Camera rotation speed	360°/1 s

Wireless video transfer

Frequency	4 channels band 5,18 - 5,86 GHz
Transmitter power max.	50 mW (14,5 mW)
Modulation	OFDM
Video out	HD-SDI-SMPTE 292M

Wireless data transfer

Frequency	448,17 MHz
Transmitter power	200 mW or 500 mW
Data speed	9600 Baud
Data format	RS422
Certification	CE

